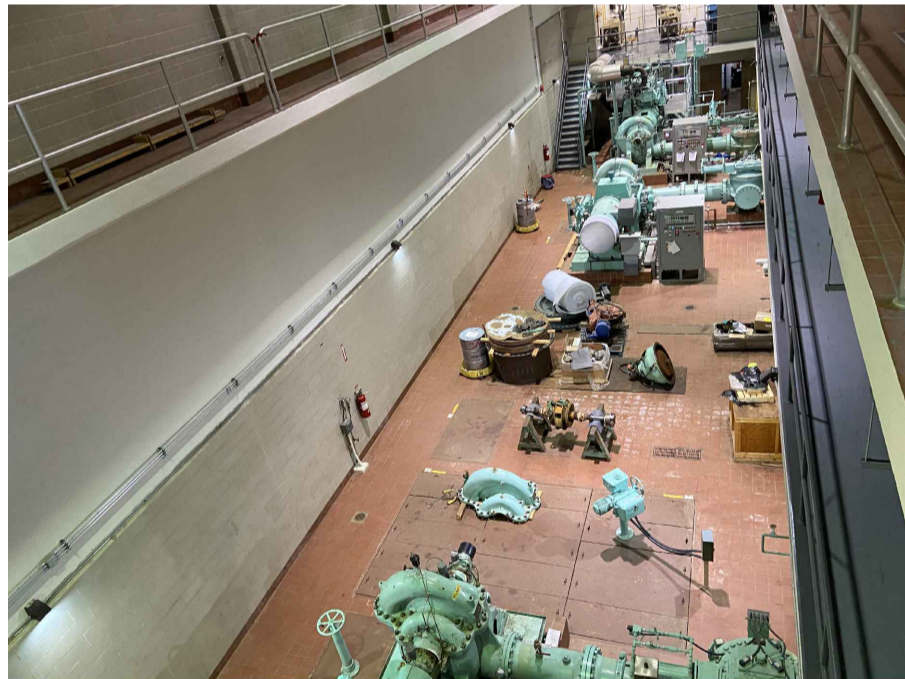
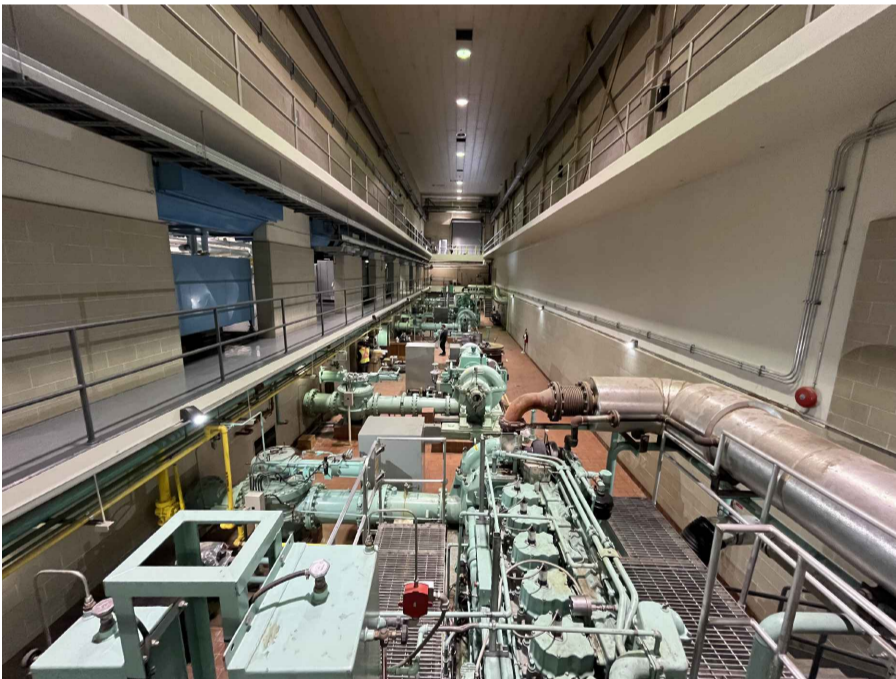


PUMP LEVEL: EL. 225.550
Scale 1:100



**PUMP FLOOR (DESIGNATED
INTERIOR LAYDOWN AREA)**



PUMP FLOOR LOOKING NORTH



NORTH ACCESS DOOR



EXISTING SOUTH FLOWMETER (FE-M1541)

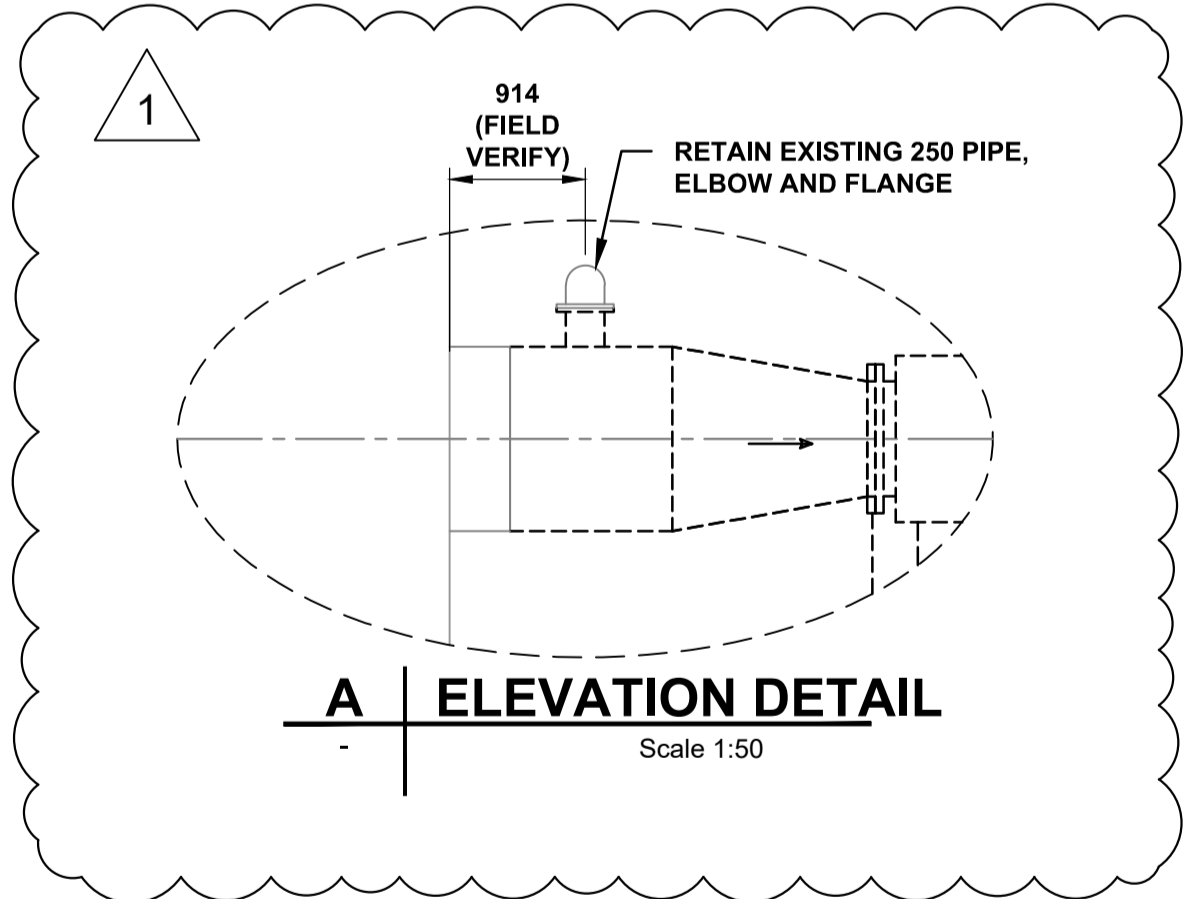


SOUTH ACCESS DOOR



**SOUTH EXISTING 250 PIPE
TIE-IN TO 1200 PIPE**

- DEMOLITION NOTES :**
1. DEMOLISH EXISTING CONCRETE PIPE SUPPORTS. SAW CUT 25mm BELOW FINISHED FLOOR AROUND CONCRETE PIPE SUPPORT SIZE. CHIP CONCRETE FLOOR UTILIZING HAND HELD JACK HAMMER TO A FULL DEPTH OF 50mm. SAW CUT EXISTING PIPE SUPPORT VERTICAL REINFORCING STEEL 50mm BELOW FINISHED FLOOR. DO NOT DAMAGE EXISTING SLAB REINFORCING STEEL. MAINTAIN AREA IN SATURATED SURFACE DRY STATE FOR 24 HOURS PRIOR TO CASTING. CAST REPAIR MORTAR. MAINTAIN INITIAL SET, REPAIR MORTAR IN SATURATED SURFACE DRY STATE FOR 7 CONSECUTIVE DAYS.



METRIC
WHOLE NUMBERS INDICATE MILLIMETRES
DECIMALIZED NUMBERS INDICATE METRES



WARNING
IF POWER EQUIPMENT OR EXPLOSIVES ARE TO BE USED FOR EXCAVATION ON THIS PROJECT THE CONTRACTOR MUST:
1) NOTIFY THE GAS COMPANY OF THE PROPOSED LOCATION OF EXCAVATION.
2) TAKE PRECAUTION TO AVOID DAMAGE TO GAS COMPANY INSTALLATIONS.
SEE PROVINCIAL REGULATION 210/72 FOR DETAILS

**LOCATION APPROVED
UNDERGROUND STRUCTURES**
SUPV. U/G STRUCTURES COMMITTEE DATE
NOTE:
LOCATION OF UNDERGROUND STRUCTURES AS SHOWN ARE BASED ON THE BEST INFORMATION AVAILABLE BUT NO GUARANTEE IS GIVEN THAT ALL EXISTING UTILITIES ARE SHOWN OR THAT THE GIVEN LOCATIONS ARE EXACT. CONFIRMATION OF EXISTENCE AND EXACT LOCATION OF ALL SERVICES MUST BE OBTAINED FROM THE INDIVIDUAL UTILITIES BEFORE PROCEEDING WITH CONSTRUCTION.

VERTICAL DATUM: CGVD28 (HT2.0 Geoid)	
HORIZONTAL DATUM: NADB3 (June 1990), Zone 14	
1	ISSUED FOR ADDENDUM 1
0	ISSUED FOR CONSTRUCTION
NO.	REVISIONS
DATE	DATE
BY	BY

AECOM	
DESIGNED BY	ZV
CHECKED BY	CL
DRAWN BY	LB
APPROVED BY	AA
RELEASED FOR CONSTRUCTION	
SCALE:	AS NOTED
HORIZONTAL	
VERTICAL	
DATE	2025 10 01
PLOT DATE:	2025 10 01

ENGINEER'S SEAL	
CONSULTANT DRAWING NUMBER	
P-31	

THE CITY OF WINNIPEG WATER AND WASTE DEPARTMENT ENGINEERING SERVICES DIVISION	
DISCHARGE METER UPGRADES AT THE REGIONAL PUMPING STATIONS MacLean PUMPING STATION PROCESS DEMOLITION PLAN	
SHEET 6 OF 19 CITY DRAWING NUMBER	1-0630M-P0020-001